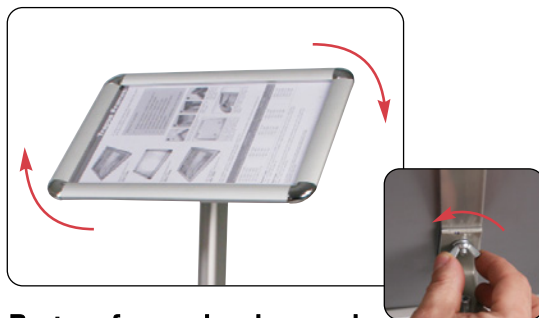




Simple snap action poster frame complete with stand. Ideally suited to information display, directional signage or product promotions.

features & benefits

- Freestanding poster holder
- Available in A4 and A3 sizes
- Aluminium with anodised silver finish
- Simple snap action poster frame
- Head rotates permitting portrait or landscape format literature
- Quick assembly, breaks down for easy transportation



Poster frame head may be rotated into landscape format
Simply unscrew nut on rear of head to rotate



Sentry A4

Sentry A3

hardware specifications

Sentry A4 (in portrait format)

Assembled dimensions:
1030 (h) x 250 (w) x 335mm (d) approx
(40.55 x 9.84 x 13.19")

Foot dimensions: 335 x 250mm approx
(13.19 x 9.84")

Weight: 2.4kg approx (5.29lbs)

Sentry A3 (in portrait format)

Assembled dimensions:
1065 (h) x 327 (w) x 335mm (d) approx
(41.93 x 12.87 x 13.19")

Foot dimensions: 335 x 250mm approx
(13.19 x 9.84")

Weight: 2.6kg approx (5.73lbs)

graphic specifications

Sentry A4

Poster dimensions:
210 x 297mm approx
(8.27 x 11.69")

Visual dimensions:
189 x 276mm approx
(7.44 x 10.87")

Sentry A3

Poster dimensions:
420 x 297mm approx
(16.54" x 11.69")

Visual dimensions:
399 x 276mm approx
(15.71 x 10.87")

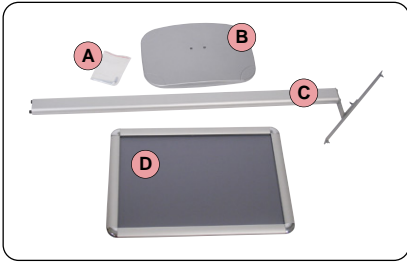
additional info

Availability:
Aluminium with anodised silver finish

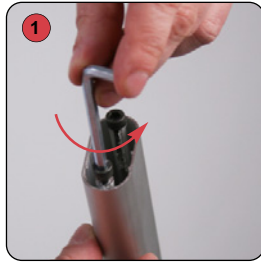
Clear protective sheet material:
PVC

Poster thicknesses:
Snap frame is suitable for graphic substrates up to 1mm (0.039") thick

Assembly Instructions



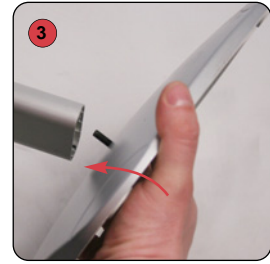
Included in kit:
5mm (0.196") Allen key (A), Base (B), Stand section (C), and Poster frame (D)



1 Using the Allen key remove both screws from the base of the stand section



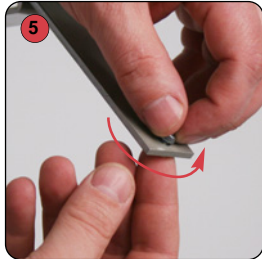
2 Push both screws through the base (head of screw nearest the floor)



3 Secure the stand section to the base, hand tighten both screws



4 Using the Allen key tighten both screws



5 Unfasten both nuts and screws from the top of the stand section



6 Open up the snap frame sides



7 Lift out the clear protective sheet



8 Place the screw through the hole in the snap frame side



9 Secure the Snap frame to the stand section, hand tighten the nut



10 Tighten the screw using a cross-point screw driver
(Repeat steps 8 to 10 for the 2nd screw/nut)



11 Fit the poster into the snap frame



12 Re-fit the clear protective sheet



13 Close the snap frame sides to complete